

A photograph of a dining room. In the center is a round, dark wood dining table set for a meal with white plates, glassware, and silverware. A tall, slender vase filled with a bouquet of colorful flowers stands in the center of the table. Surrounding the table are several chairs with dark wood frames and upholstered seats. Some chairs have light green upholstery with a floral pattern, while others have blue upholstery. In the background, there is a fireplace with a decorative mantel. Above the fireplace hangs a large, vibrant painting of red and pink flowers on a green background. The walls are painted a deep purple color. A lamp with a white shade is visible on the right wall. The overall atmosphere is elegant and sophisticated.

INDIANAPOLIS MONTHLY 2003

DREAM HOME

AN EXCLUSIVE LOOK INSIDE THE CITY'S PREMIER SHOW HOME

A SUPPLEMENT TO INDIANAPOLIS MONTHLY

Informal Extravagance

The *Indianapolis Monthly* Dream Home illustrates cozy ambiance on a grand scale.

by Shari Held photos by E. Anthony Valainis

Eighteen months ago, the rolling hills northeast of 151st Street and Carey Road in Westfield were practically bare: Only six trees punctuated the grassy, windswept landscape. Today, more than 400 full-grown trees adorn the lakefront property—providing the first of many surprises in the 2005 *Indianapolis Monthly* Dream Home home tour, taking place from August 30 through September 14 in The Bridgewater Club development in Hamilton County. This year's residence artfully blends traditional and contemporary styles to create a winning combination of comfort, style and function.

The landscaping around the Dream Home was anything but an afterthought in the construction of the home. A natural-looking woodline of mature spruces interspersed with redbuds and cherry trees rim the perimeter of the 8½-acre lot, while specialty trees



The exterior of the 2003 Dream Home, opposite, could front an estate home in the Hamptons or an oceanfront home in Malibu—but its relaxed interior and extensive yard provide the perfect surroundings for a growing family. The stenciled floor in the foyer, above, appears to be 30 or 40 years old, adding a lived-in touch to the interior.





equally important, the big story about this house is color," says Smith. "The very bright palette of purples, greens and watermelon make the house feel more contemporary."

The dining room fireplace, hand-carved from alder wood by Edmon's Unique Furniture and Stone Gallery in Los Angeles, adds to the traditional look of the room. "The fluting on the legs and dentil molding is very inherent to the traditional French Colonial look," says Mercedes Simonian, daughter of store namesake Edmon. The fireplace was antiqued, distressed and crackle-finished by Blice Edwards Studios in Indianapolis. Four silver sconces strategically placed in each corner and cove uplighting around the room provide illumination for both grand and intimate dining.

A side door in the dining room leads into the back hallway, from which open a butler's pantry, dry-goods pantry, half bath, back stairway, service foyer and laundry room. "This is going to be a very well-traveled area, where people and deliveries come into and go out of the house," says Smith. The back stairway leads to the adult gameroom on the lower level of the home. The gameroom's pool table from Cue & Billiard Showcase, with its stainless-steel legs, complements the space's European furnishings from Houseworks.

Going up the stairway to the second floor takes you to the children's "wing," with bedrooms to the left and the kids' family room and playroom to the right. Brightly colored Maine Cottage furniture in coordinating fabrics give the room a casual air; the kids also enjoy a TV set and his-and-hers computer nooks in this space.

A highlight of the kids' wing is the playroom, located just beyond the family room at the far end of the home. It's been crafted into an interactive village, where kids can exercise their imagination to the hilt: Colorful felt valances separate the area into individual storefronts

Less is more in the Dream Home's master suite, opposite and above.

The room's understated, elegant atmosphere provides a refuge from the cares of the day, and its sitting area, above, evokes an era when correspondents exchanged carefully crafted letters rather than hastily typed e-mails.



The 2003 Dream Home offers
spicy dining and entertaining spaces.

by Amy Mallett photos by E. Anthony Valainis

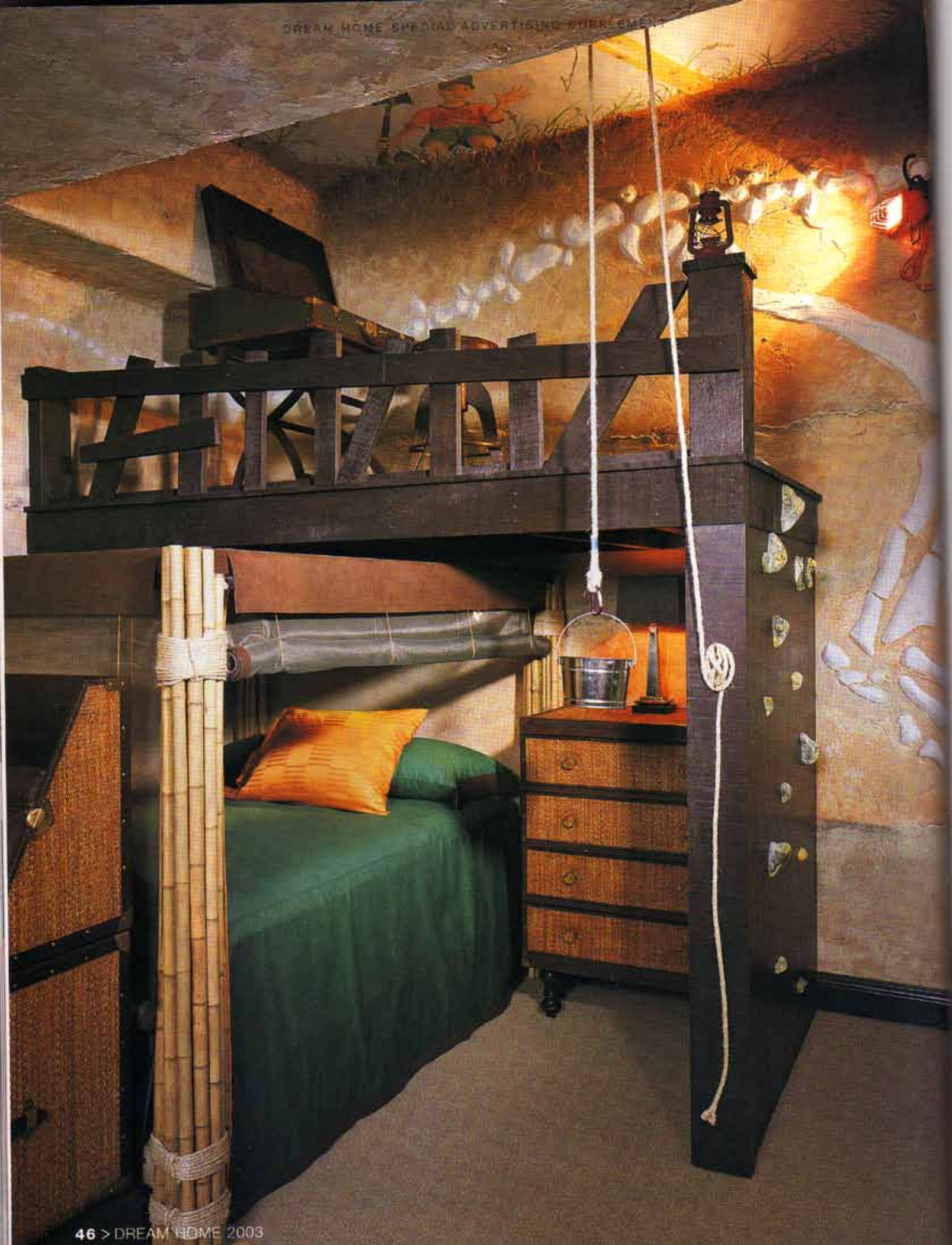
The Dream Home's expansive kitchen, opposite and above, includes glass terrazzo countertops by Santarossa Mosaic and Tile, opposite, and chef-quality appliances by H.H. Gregg, opposite and above.

Living Large

The 2003 *Indianapolis Monthly* Dream Home offers visitors something old, something new, something borrowed and something... purple?

The Dream Home's public spaces, including the great room, kitchen and dining room, pay homage to the era of grand family homes when large rooms satisfied both the formal and informal living needs of homeowners. The interior's design isn't a flat historical reproduction, though—the dramatic use of color on a large scale plants the house firmly in the present. Both traditionalists and fans of modern design will find aspects of the Dream Home to enjoy.

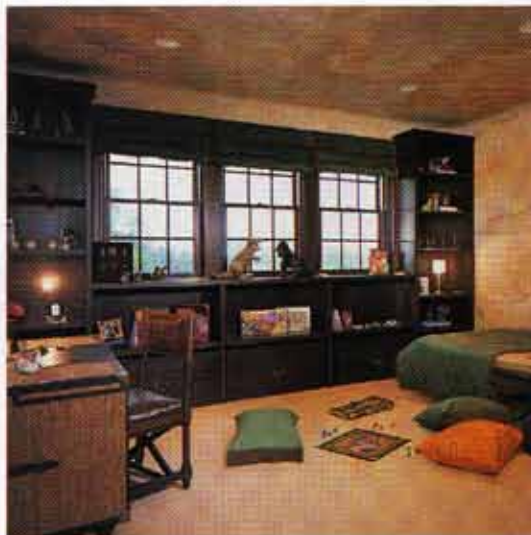
The oval-shaped entryway gives visitors their first impression of the residence's scale as soon as they walk through the front door. A majestic staircase winds its way around walls bedecked with original artworks by Hoosier artists. Warm, welcoming dark wood beckons visitors inside, and a Donghia sofa provides inviting seating. The entry's creamy color palette is punched up with unexpected doses of bright green and purple.



Kid Space

The Dream Home children's wing
inspires the imagination.

by Lori D. Roberts photos by E. Anthony Valainis



The boy's room is a young adventurer's delight. Rock-wall handholds discourage parental snooping in the loft area, opposite, while dinosaur bones in the walls inspire the imagination. Mosquito netting surrounding the bed further enhances the ambiance of a foreign safari.

Most of the upscale homes featured in design magazines are tailored to the wants of mature professionals: Elaborate home theaters, mile-wide kitchens and massive great rooms all appeal to homebuying adults. The 2003 *Indianapolis Monthly* Dream Home, however, boasts several rooms dedicated to the wants of children—making the Westfield residence a truly family-oriented dwelling.

Kids will feel welcome in this year's Dream Home, with its bright colors and inviting combination of traditional and soft contemporary furnishings. This house is not a "hands-off" environment. Instead, there's a rough-and-tumble lower level, an exclusive children's wing on the second floor and even a special spot in the kitchen just for kids.

Debra Smith, interior designer of the 2003 Dream Home, crafted the children's spaces to accommodate the needs of the homeowners' active elementary-school age children. The bedrooms were designed to match each child's individual taste, while the shared spaces handle playmates and parties. The kids' rooms have plenty of extra storage for the toys, books, school supplies and games that families acquire during the tumultuous child-raising years.

